



# Get ready for PPWR

Pallet reuse for a sustainable future

# By the industry, for the industry

The story of PRS started in the mid-nineties, in Germany, when the German chemical industry council (VCI) started working on a concept for a sustainable, circular collection and recycling system for packaging and palletising. The initiative was embraced by Plastics Europe (then APME), the joint European polymer producers. Together, they came up with an industry-wide concept based on standard, re-usable CP-type pallets. They called it the "Pallet Return System" which later became abbreviated to PRS.

1996



A large, stylized logo for the PRS label. It features the letters 'RS' in a bold, green, sans-serif font, with the word 'label' in a smaller, green, sans-serif font below it. The logo is partially enclosed by a green circular arc on the right side. The background is white with a green leaf-like shape at the bottom left.

**RS**  
label

**1997**

Next step was to find a company that could actually put PRS into practice and manage re-use and shared use on a European level. With over 100 years of experience in quality pallets, Faber Group won the bid. It founded a new company – PRS Management BV – and built a European network of depots, suppliers, carriers and collection service centers.

**TODAY**

Now, many years later, the original participants remain customers of PRS. At PRS, we are proud of this heritage. Our pooling system really was created by the industry, for the industry. As a unique collaborative circular economic model that reduces waste by promoting re-use, it may be more relevant than ever. Because the EU Packaging & Packaging Waste Regulation (PPWR) sets challenging targets for mandatory reuse of transport packaging. And that is precisely what PRS is doing.

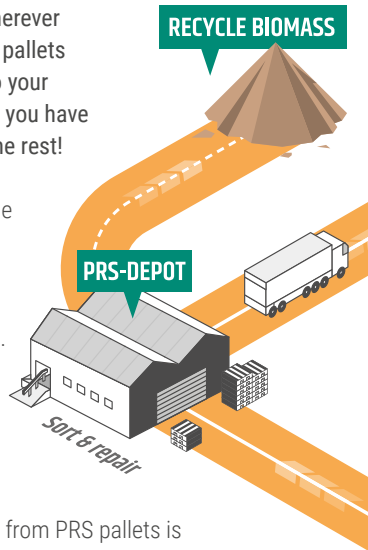


# How it works

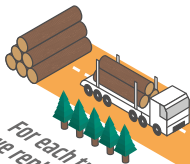
The PRS pooling system is really straightforward. When you need pallets, you send us an order and we supply the amount of pallets you need, whenever and wherever you need them. You can then use the pallets to transport your polymer products to your customers. Simply let us know where you have shipped the PRS pallets, and we do the rest!

Once your customers have emptied the PRS-pallets, they simply store them separately for collection and we make sure the pallets are picked up and transported to one of our local depots. There, the pallets are inspected and repaired against our strict quality criteria and re-supplied to the nearest customer, once again ready for use.

At the end of their life-cycle, all timber from PRS pallets is re-processed to produce press-wood products or for use as biomass (e.g. used to fuel the drying ovens that heat-treat PRS-pallets). Nothing goes to waste. The PRS system saves a tree each time we recover and reuse just 7 pallets!

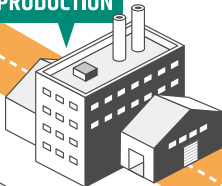


**GROW SUSTAINABLE  
FORESTS**

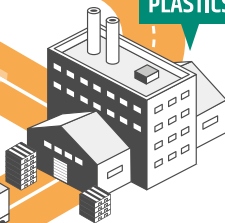


*For each tree cut down  
we replant 5 trees*

**PALLET  
PRODUCTION**



**PETROCHEMICAL/  
PLASTICS INDUSTRY**



**PLASTICS  
CONVERTERS**



# Get ready for PPWR

---

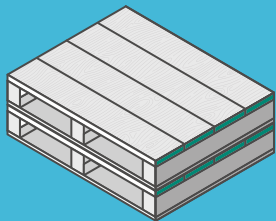
We have been in this business for decades. Our pooling system of re-usable, high-quality pallets from sustainable sources is well-established. Now it's time to further realise the full potential of this unique system.

Whether you're a plastics producer, recycler, distributor or converter, the pressure is on to reduce your carbon footprint and reduce waste. The PPWR (EU Packaging and Packaging Waste Regulation) sets hard targets for controlled reuse of transport packaging, such as pallets. By 2030 40% of all transport packaging must be reused in a reuse system, and within the same country or company this even adds up to 100%.

Together with you, we create a pan-European network: a cooperation between all value chain stakeholders, enabling controlled and proven reuse of pallets, with PRS as the system operator!

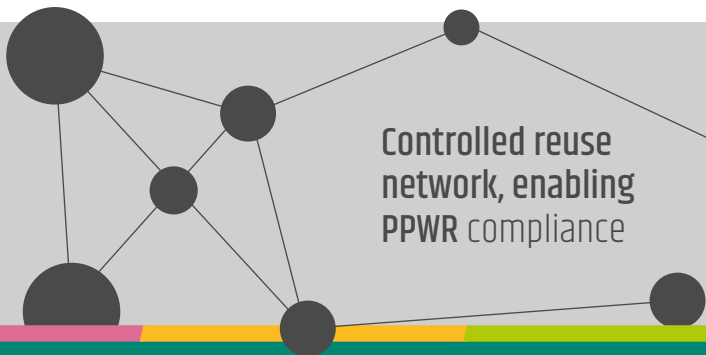
For this network of sustainable businesses we have created the PRS Green Label. Together, contributing to a better environment.





Re-usable, controlled,  
high quality pallets

Saving up to 40%  
carbon emissions



Controlled reuse  
network, enabling  
PPWR compliance

# Benefits

---

Over the years, PRS has built an solid reputation for quality, reliability and value for money, while working hard to reduce its carbon footprint and contribute to the sustainability goals of its customers.



## Supply reliability

---

With one-way pallets, you never have complete control of your supply chain, and supply reliability can be hard to achieve. Thanks to our circular model based on reuse, we always have enough pallets available in our pool.



## Central Control, Local Support

---

Wherever you are in Europe, we provide a single point of contact, ensuring that our relationship with you gets a personal touch. We are always nearby, thanks to our extensive European network and our regional management structure. When it comes to pallets, using the PRS system provides you with complete peace of mind.



## Sustainability

---

By using PRS , you are ready to meet the mandatory PPWR targets for transport packaging reuse.

Did you know that by using PRS pallets you can save up to 40% on your carbon emissions? On top of that all PRS pallets are from PEFC or FSC certified timber.



## Quality & safety

---

The quality – and safety – of PRS pallets is stable and controlled, whether they are new or reconditioned. Based on our ISO 9001 certified processes, we perform frequent audits at our depots and production facilities according to a strict schedule.



## Reduced costs

---

Why not let us show you how you can start to reduce your costs and environmental impact by using the PRS system for your pallet needs. Contact us – we are happy to help!

# Working together

---

PRS Network users are regarded not only as customers, but also as collaborative partners, as we work together to improve the system.

We are constantly investing in and renewing the pallet pool to replace any lost pallets. However, our sustainable network works best if as many pallets as possible can be re-used. We work together with producers, converters, distributors and traders to optimise the PRS-pallet recovery.

As your partners, we provide all necessary support for a smooth implementation of the PRS pooling system at your company:

- We help you to set up the communication files.
- Through our return management reporting and analysis, we help you to maximize pallet recovery.
- Our region managers are always available to support you.
- If needed, we help you to configure your palletising facilities to accept PRS pallets.

We would be happy to discuss your specific needs and wishes. Feel free to contact us!



MEMBER OF FABER GROUP

# About Faber Group

We are an international family company specialized in circular load carrier services. Our group consists of several specialist pooling businesses (IPP, PAKi, PRS and vPOOL). We have a robust, agile and sustainable network across Europe to streamline the supply chain. We provide sustainable, reliable, cost-effective pooling services for pallets and boxes to supply all industries throughout Europe.

We facilitate this by sharing our logistic resources and investing in new concepts. It is our ambition to have a positive impact with our logistics solutions for supply chains. We bring circularity into logistics and make being circular a service in a shared economy. This way we carry impact.

More information, please visit: [www.faber.group](http://www.faber.group)



## PRS Pooling

[prs.commercial@prs-pooling.com](mailto:prs.commercial@prs-pooling.com)  
[www.prs-pooling.com](http://www.prs-pooling.com)  
+31 (0) 40 266 21 28